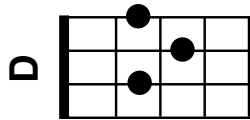
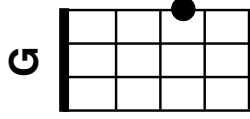
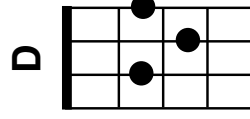
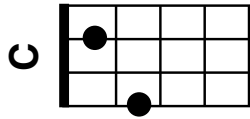
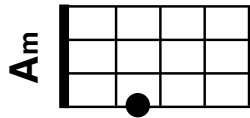
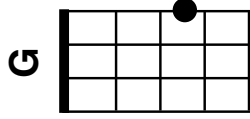
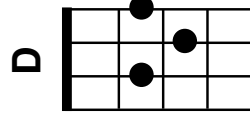
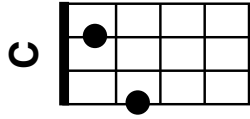
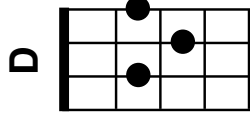
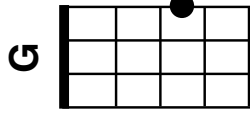
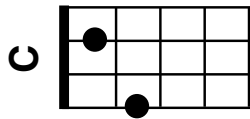
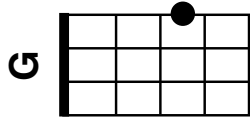
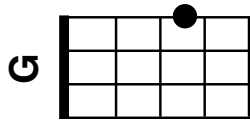
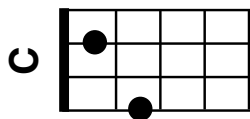
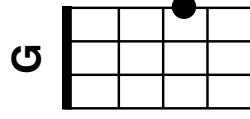
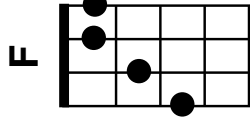
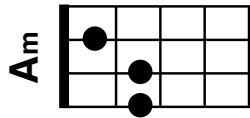
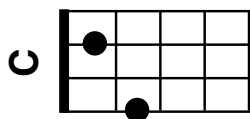
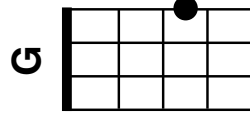
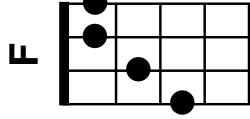
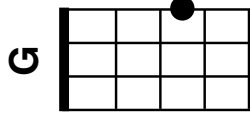
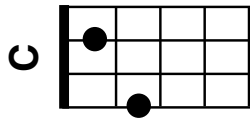
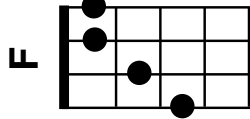
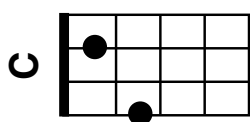


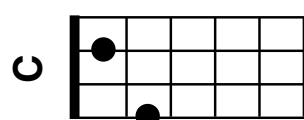
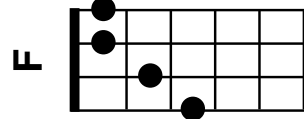
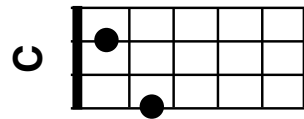
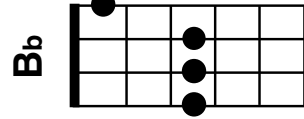
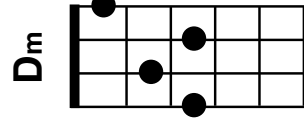
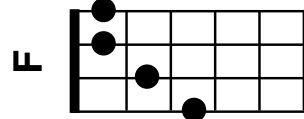
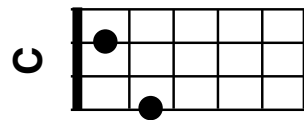
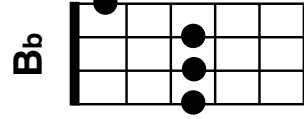
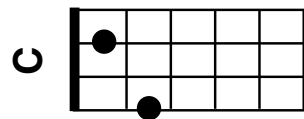
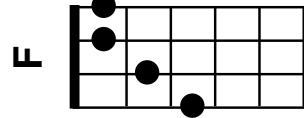
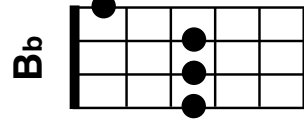
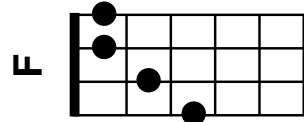
# BROWN-EYED GIRL



PLAY 4 TIMES



PLAY 4 TIMES



PLAY 4 TIMES

# BYE BYE BLUES

Chord diagrams for "BYE BYE BLUES":

Row 1: C, C, Ab7, Ab7, C, C, A7, A7

Row 2: D7, D7, G7, G7, C, Cdim, Dm7, G7

Row 3: G, G, Eb7, Eb7, G, G, E7, E7

Row 4: A7, Am, D7, D7, G, Gdim, Am7, D7

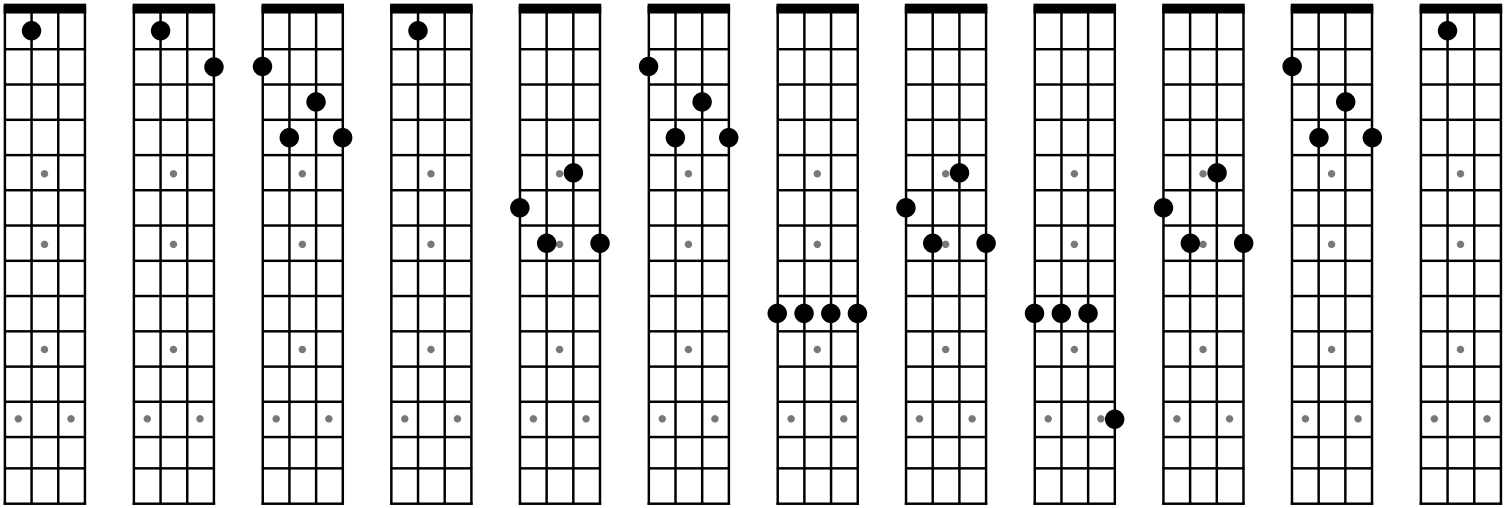
Row 5: C, Ab7, C, C, G, Eb7, G, G

Capo positions: 1 (between Row 2, Col 4 and Row 4, Col 5), 2 (between Row 4, Col 5 and Row 5, Col 6)

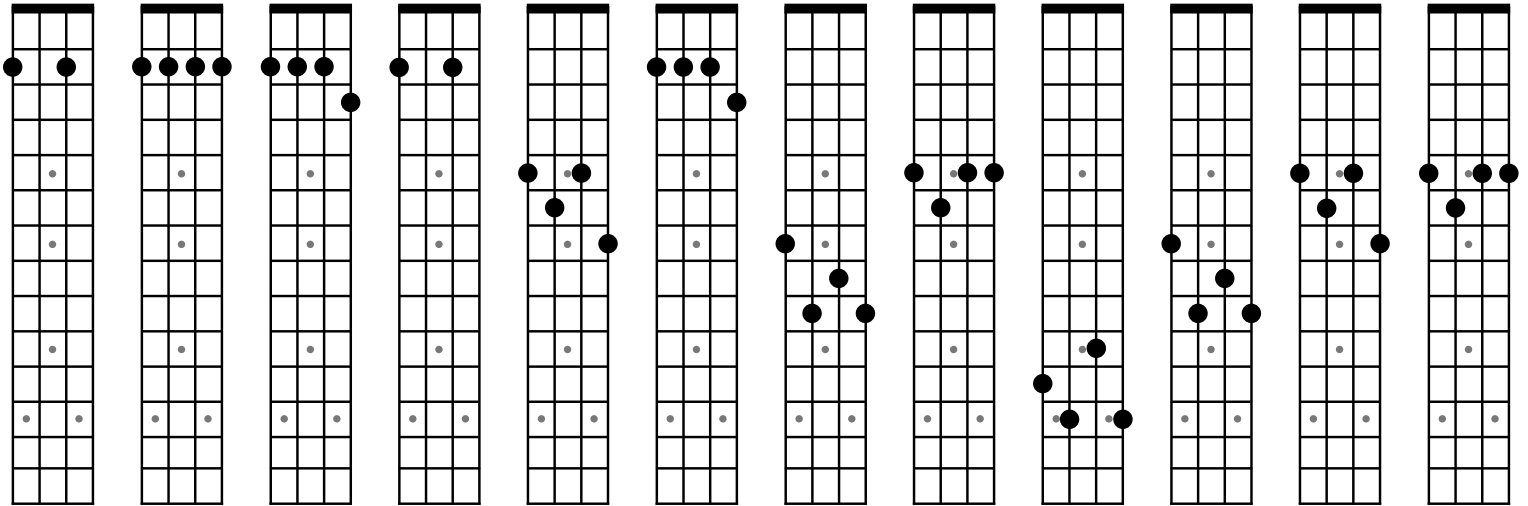
Trill marks (///) are present under the bottom diagrams of the 4th and 5th columns.

# SWEET GEORGIA BROWN

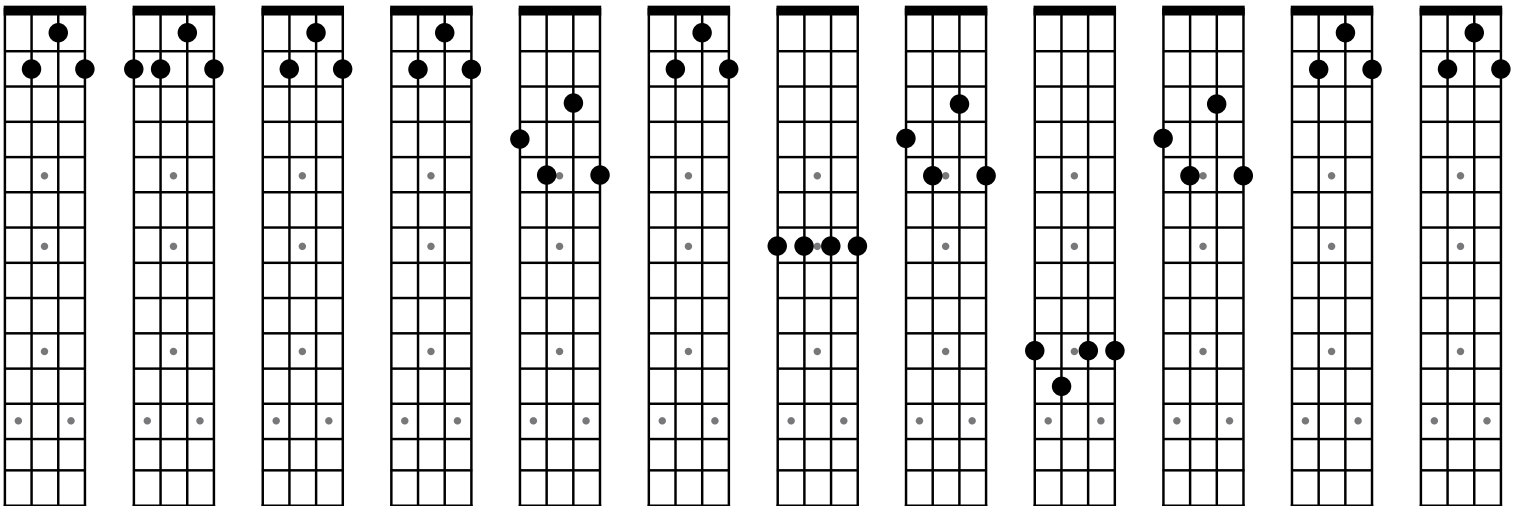
## E7



## A7

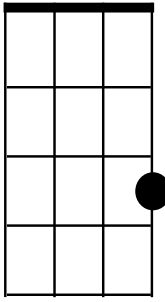


## D7

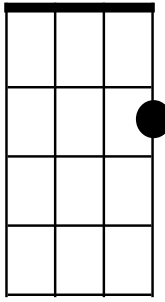


# CHORD COUSINS - 1234 FORMS

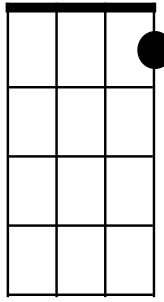
C



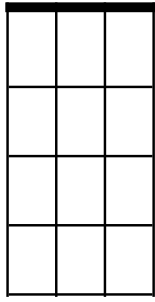
CM7



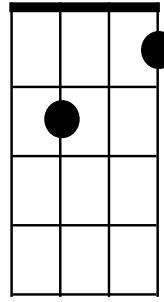
C7



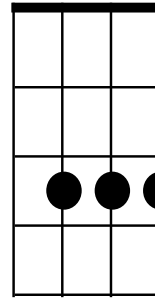
C6



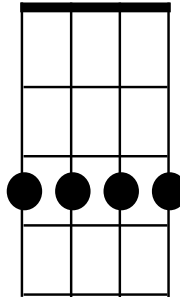
C9



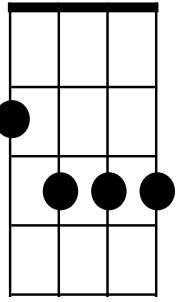
Cm



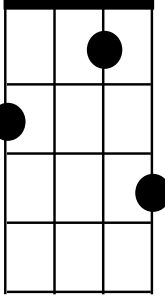
Cm7



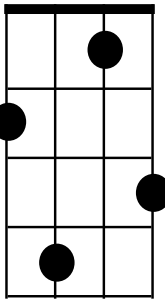
Cm6



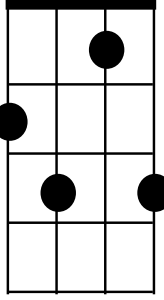
F



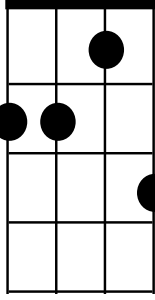
FM7



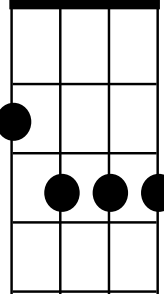
F7



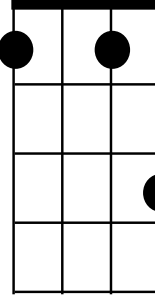
F6



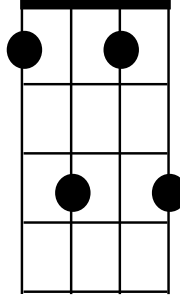
F9



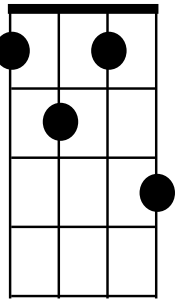
Fm



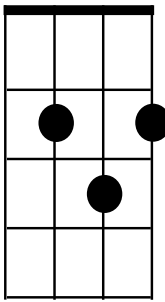
Fm7



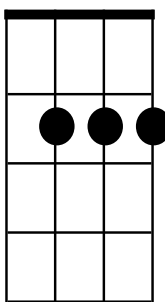
Fm6



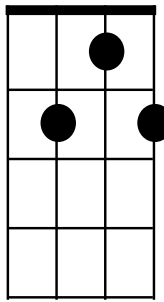
G



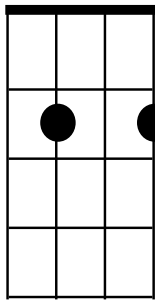
GM7



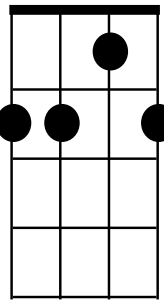
G7



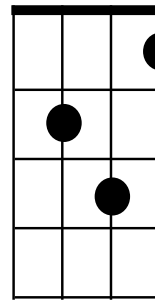
G6



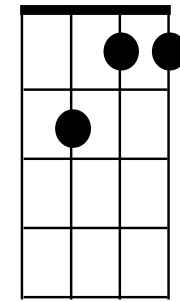
G9



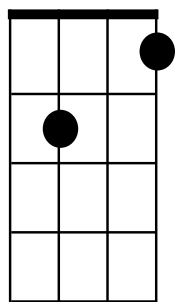
Gm



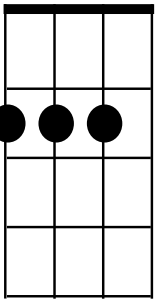
Gm7



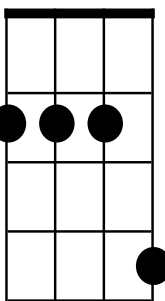
Gm6



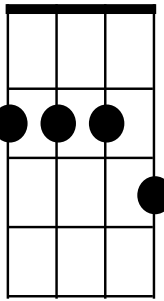
D



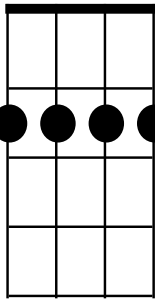
DM7



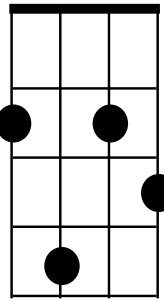
D7



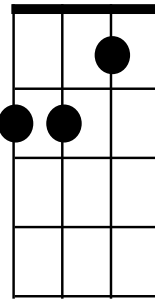
D6



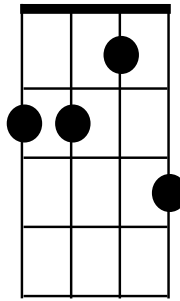
D9



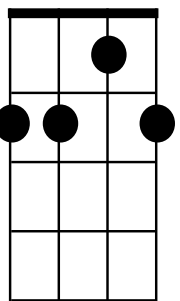
Dm



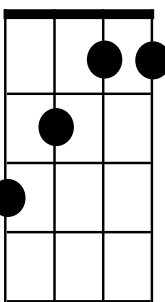
Dm7



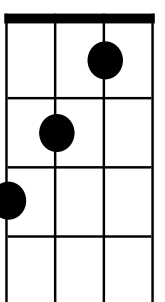
Dm6



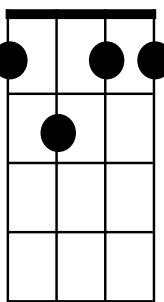
Bb



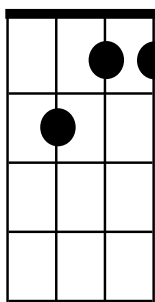
Bbm7



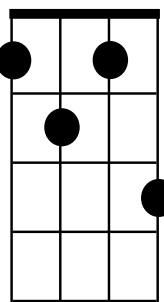
Bb7



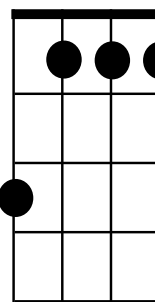
Bb6



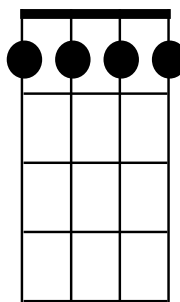
Bb9



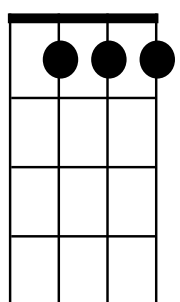
Bbm



Bbm7



Bbm6



# BLUES CHORDS

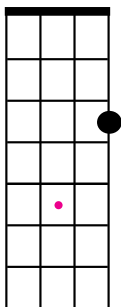
## I

## IV

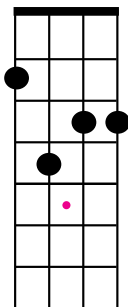
## V

### 1

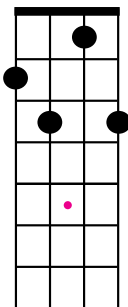
**G C**



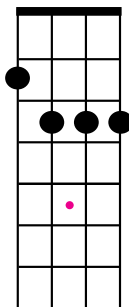
**G<sub>6</sub> C<sub>6</sub>**



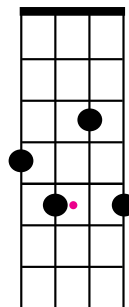
**C<sub>7</sub> F<sub>7</sub>**



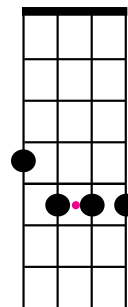
**C<sub>9</sub> F<sub>9</sub>**



**D<sub>7</sub> G<sub>7</sub>**

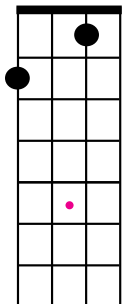


**D<sub>9</sub> G<sub>9</sub>**

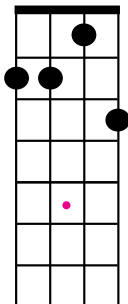


### 2

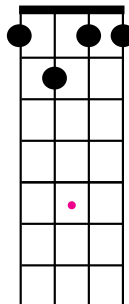
**C F**



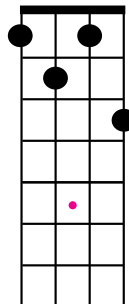
**C<sub>6</sub> F<sub>6</sub>**



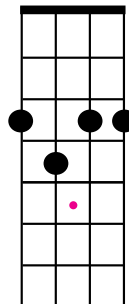
**F<sub>7</sub> B<sup>b</sup><sub>7</sub>**



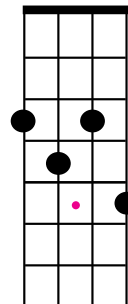
**F<sub>9</sub> B<sup>b</sup><sub>9</sub>**



**G<sub>7</sub> C<sub>7</sub>**

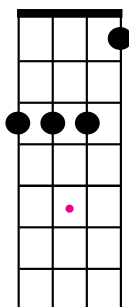


**G<sub>9</sub> C<sub>9</sub>**

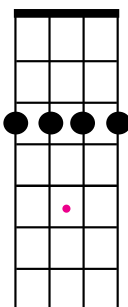


### 3

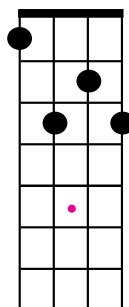
**B<sup>b</sup> E<sup>b</sup>**



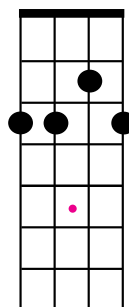
**B<sup>b</sup><sub>6</sub> E<sup>b</sup><sub>6</sub>**



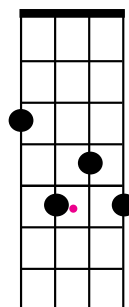
**E<sup>b</sup><sub>7</sub> A<sup>b</sup><sub>7</sub>**



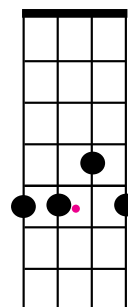
**E<sup>b</sup><sub>9</sub> A<sup>b</sup><sub>9</sub>**



**F<sub>7</sub> B<sup>b</sup><sub>7</sub>**

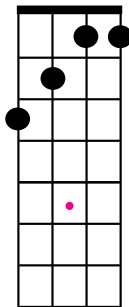


**F<sub>9</sub> B<sup>b</sup><sub>9</sub>**

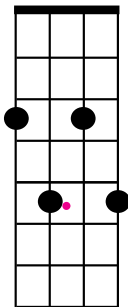


### 4

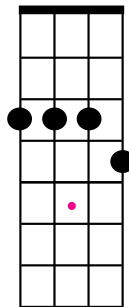
**F B<sup>b</sup>**



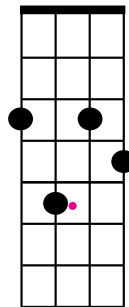
**F<sub>6</sub> B<sup>b</sup><sub>6</sub>**



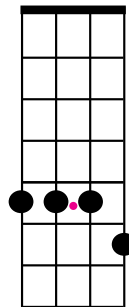
**B<sup>b</sup><sub>7</sub> E<sup>b</sup><sub>7</sub>**



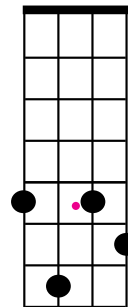
**B<sup>b</sup><sub>9</sub> E<sup>b</sup><sub>9</sub>**



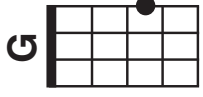
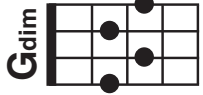
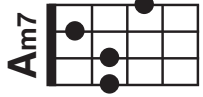
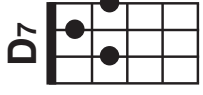
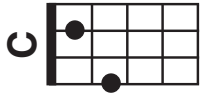
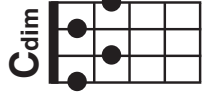
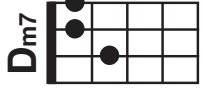
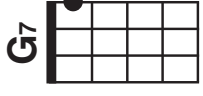
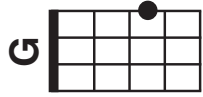
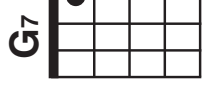
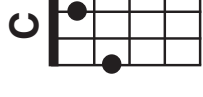
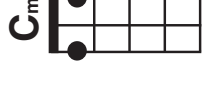



**C<sub>7</sub> F<sub>7</sub>**



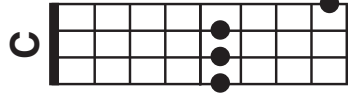
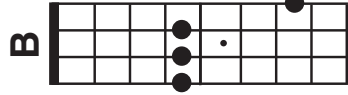
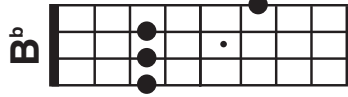
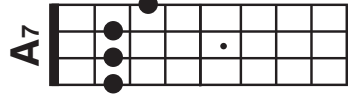
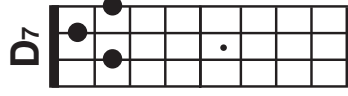
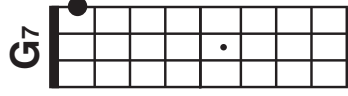
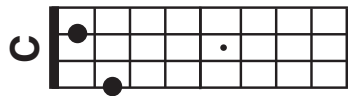
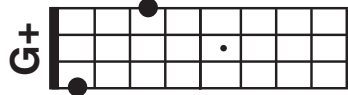
**C<sub>9</sub> F<sub>9</sub>**



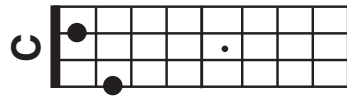
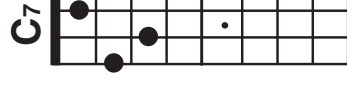

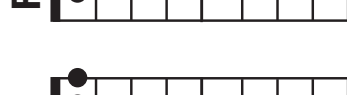
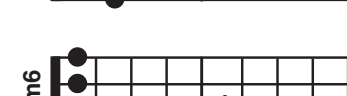
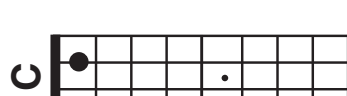
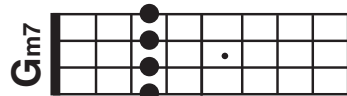
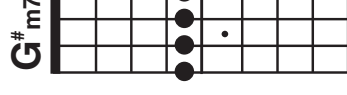
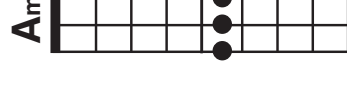


# INTROS & ENDINGS


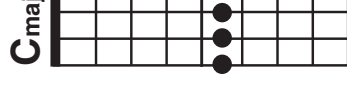

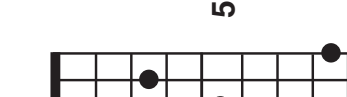
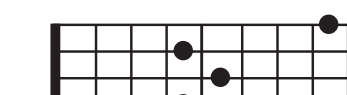
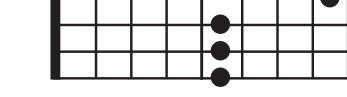
## BASIC 4 CHORD INTROS

## WALKING INTRO

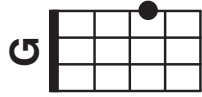



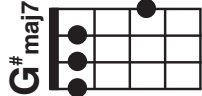


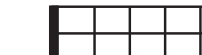
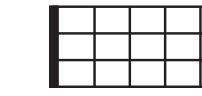
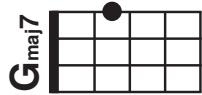
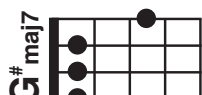
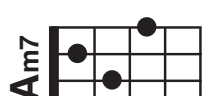




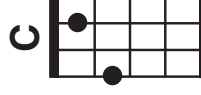


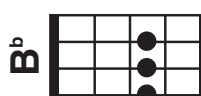















OR

## STANDARD "F" ENDING WITH VARIATIONS

## STANDARD "C" ENDING

## MAJOR 7th ENDINGS

