

F.U.N.-damentals for playing your Ukulele

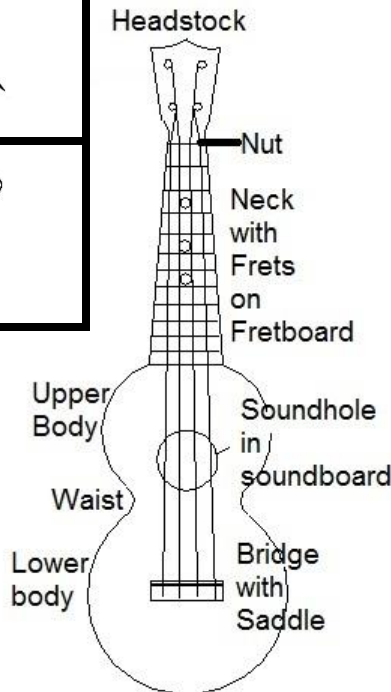
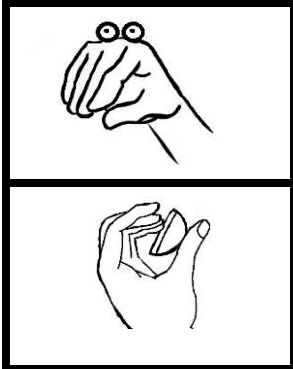
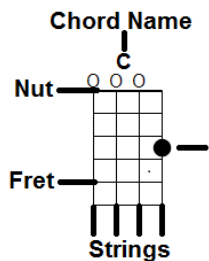
When you are learning chords for the first time, it helps to hold the ukulele out and facing you. This way you can visualize how the anatomy of a chord pattern represents finger placement on the fretboard of the instrument

For proper hand placement in making a chord, make a hand puppet and place the neck of the ukulele just inside its mouth. The tips of your fingers shouldn't go over the top of the fretboard.



Hold the ukulele against your chest with your right forearm across the top right edge of the body with the neck at an approx. 30 degree angle. Although some will disagree, I believe all ukers should use a strap. It completely frees your chord hand from any obligation to help hold the instrument and gives it the ability to move freely and without any constraints.

'Anatomy of a Chord'



F.U.N. -damentals to remember

F – Form in holding your uke

U- Upper Body Position

N- Natural position of your chord arm and hand for optimum playability

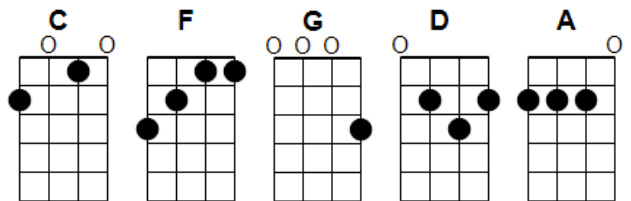
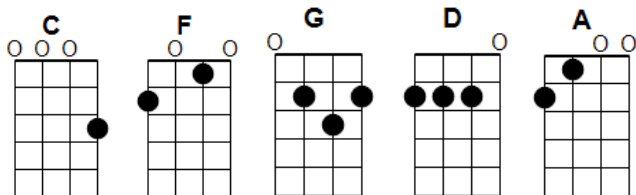
The K.I.S.S. Theory for the Ukulele- "Keep It Simple and Strum"

Everyone always wants to learn the most complicated ways to strum a particular piece of music. The reality of it is when beginning to play as well as throughout your life of playing a ukulele, sometimes the simplest of strums is the best way of achieving a sound you are striving for. The goal is always whatever sounds best to you and to make a song your own!

Your First Chords

GCEA TUNING

BARI TUNING



You are my Sunshine- Jimmie Davis

Arr. Pete McCarty

[C] You are my sunshine my only sunshine
You make me [F] happy when skies are [C] gray
You'll never [F] know dear how much I [C] love you
Please don't take my [G] sunshine a[C]way

The other [C] night dear as I lay sleeping
I dreamed I [F] held you in my [C] arms
When I a-[F] woke dear I was mis [C] taken
And I hung my [G] head and [C] cried

[C] You are my sunshine my only sunshine
You make me [F] happy when skies are [C] gray
You'll never [F] know dear how much I [C] love you
Please don't take my [G] sunshine a[C]way

I'll always [C] love you and make you happy
If you will [F] only say the [C] same
But if you [F] leave me to love a- [C] nother
You'll regret it [G] all some [C] day

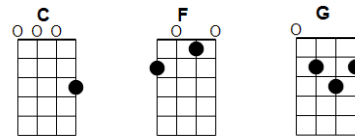
[C] You are my sunshine my only sunshine
You make me [F] happy when skies are [C] gray
You'll never [F] know dear how much I [C] love you
Please don't take my [G] sunshine a[C]way

You told me [C] once dear you really loved me
And no one [F] else could come be[C]tween
But now you [F] left me and love a-[C] nother
You have shattered [G] all my [C] dreams

[C] You are my sunshine my only sunshine
You make me [F] happy when skies are [C] gray
You'll never [F] know dear how much I [C] love you
Please don't take my [G] sunshine a[C]way

[C] You are my sunshine my only sunshine
You make me [F] happy when skies are [C] gray
You'll never [F] know dear how much I [C] love you
Please don't take my [G] sunshine a[C]way

GCEA Tuning



BARITONE Tuning

